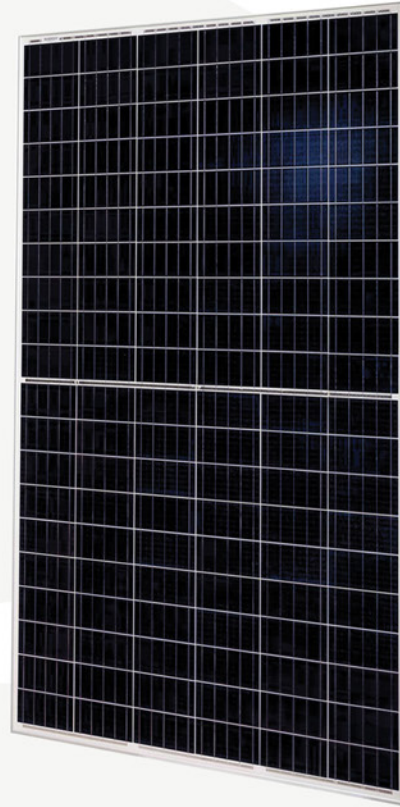






MODEL SV120 E HC





 Premium quality


 Power output
range 330-345 Wp


 100% EL testing

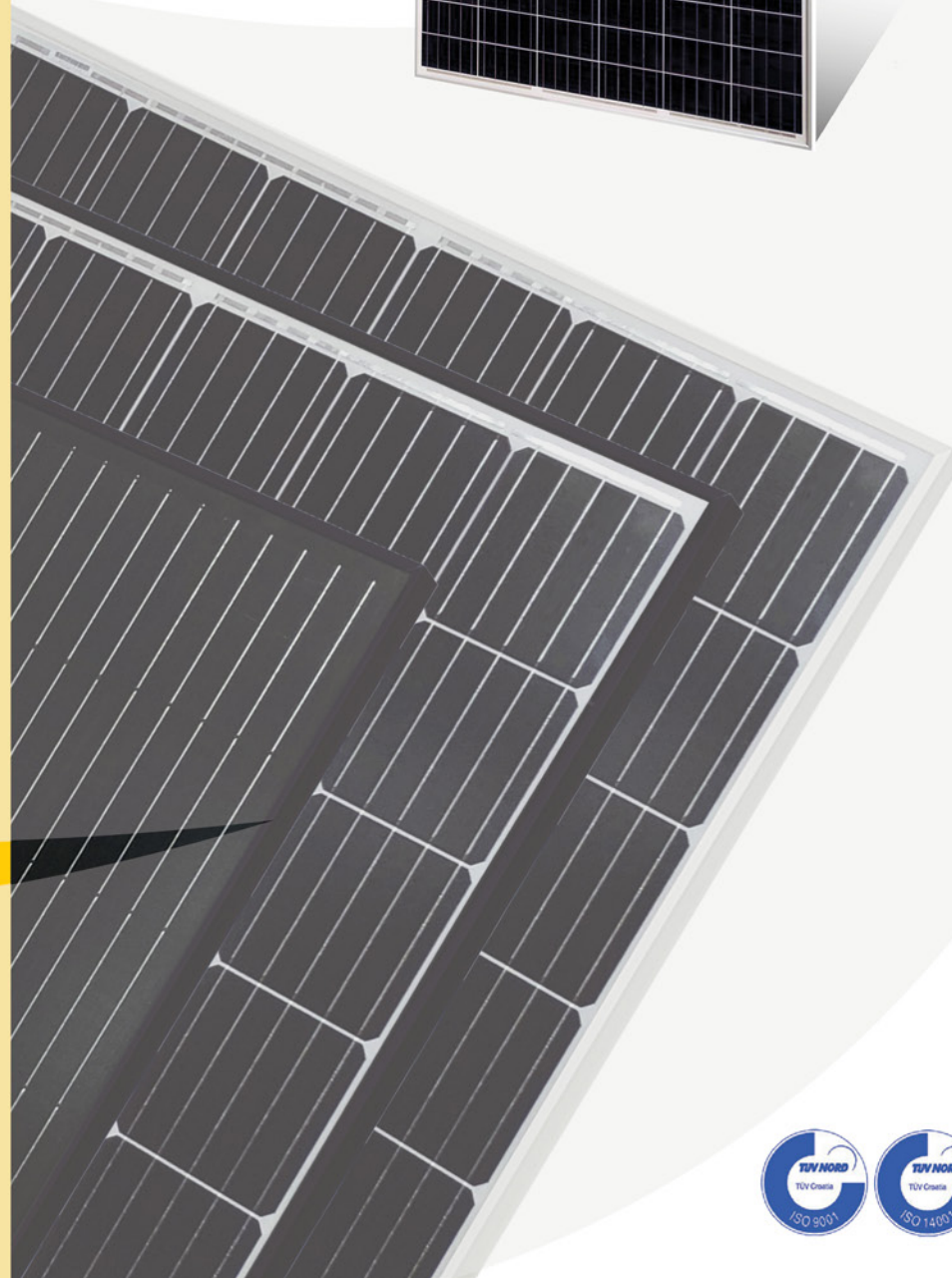
 Mechanical load
up to 5400 Pa

 Low weight

 Module efficiency
up to 20,47%

 Positive power
tolerance -0/+5 Wp

 IEC EN 61215
IEC EN 61730-1, -2



Warranty:

10 years manufacturing defects

12 years limited,
90% output power

25 years limited,
80% output power



Electrical parameters at Standard Test Conditions (STC)					
MODEL		SV120-330 E HC	SV120-335 E HC	SV120-340 E HC	SV120-345 E HC
Peak power P_{MPP}	[W]	330	335	340	345
Peak power tolerance	[W]	-0/+5			
Short circuit current I_{SC}	[A]	10,22	10,26	10,28	10,31
Open circuit voltage V_{OC}	[V]	41,29	41,64	41,86	42,09
Rated current I_{MPP}	[A]	9,52	9,58	9,63	9,69
Rated voltage V_{MPP}	[V]	34,80	35,06	35,36	35,61
Current and voltage tolerance	[%]	± 3			
Module efficiency	[%]	19,58	19,88	20,18	20,47

STC: 1000W/m² irradiance, 25 °C cell temperature, AM1, 5 g spectrum according to EN 60904-3
Average relative efficiency reduction of 3,4 % at 200 W/m² according to EN 60904-1

Electrical parameters at Nominal Operating Cell Temperature (NOCT)					
MODEL		SV120-330 E HC	SV120-335 E HC	SV120-340 E HC	SV120-345 E HC
Peak power P_{MPP}	[W]	241,1	244,4	247,8	251,1
Peak power tolerance	[W]	-0/+5			
Short circuit current I_{SC}	[A]	8,21	8,24	8,26	8,28
Open circuit voltage V_{OC}	[V]	38,0	38,3	38,5	38,7
Rated current I_{MPP}	[A]	7,63	7,66	7,70	7,75
Rated voltage V_{MPP}	[V]	31,6	31,9	32,2	32,4

NOCT: module operating parameters at 800 W/m² irradiance, 20 °C ambient temperature, 1 m/s wind speed

MECHANICAL DATA	
Dimensions (H x W x D)	[mm] 1684 x 1002 x 35
Weight	[kg] 19,0
Solar cells	120 cells, mono-Si, 158x79 mm +/- 1 mm
Cells encapsulation	Ethylene vinyl acetate (EVA)
Front	Tempered solar glass, 3,2 mm
Back	Composite polyester Film
Frame	Anodized aluminium frame with twin-wall profile and drainage holes
Junction box	IP67 with 3 Bypass diodes
Cable and connectors	Solar cable 4 mm ² , length 350 mm, PV connectors

NOTE: For extended models, SV120 EYYY, voltages and currents can vary where YYY is optional based on the chosen YYY variant (YYY = letter(s), F for black frame, B for silver frame and black backsheet, BC for full black module)

OPERATING CONDITIONS		
Temperature range	[°C]	-40 to +85
Maximum system voltage	[V]	1000
Max. series fuse rating		15A
Limiting reverse current		15A
Maximum surface load capacity		5400 Pa (Snow load)
Resistance against hail		Max. diameter of 25 mm with impact speed 23 m/s

THERMAL CHARACTERISTICS		
Temperature coefficient of P_{MPP}	[%/K]	-0,42
Temperature coefficient of I_{SC}	[%/K]	0,05
Temperature coefficient of V_{OC}	[%/K]	-0,33

